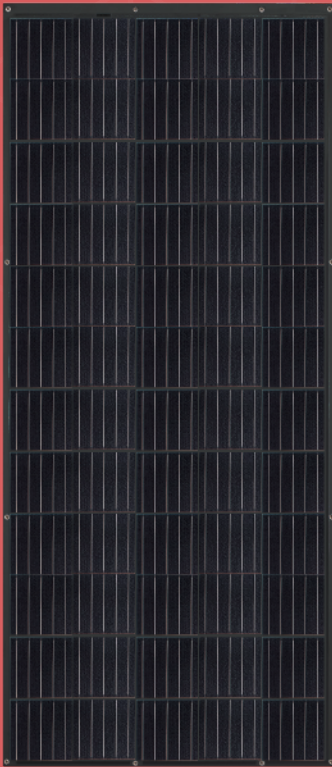


eArc

SMF310M-5X12DB-e

310 Watt

60 Cell Monocrystalline Module



Ultra-light: Glass free module weighs 5.0 kg, 70% lighter than conventional glass modules.



Aesthetic: Seamless integration with underlying installation surface.



Durable: eArc is the first glassless module to pass the same durability tests as conventional glass modules, including IEC 61215:2016, IEC61730:2016 and UL1703 (USA). eArc has also passed PID, salt mist and ammonia corrosion tests.

POWER OUTPUT RANGE 305~310 W

POWER TOLERANCE 0-5 W

12 Year Product Warranty

25 Year Linear Power Warranty



www.sunman-energy.com

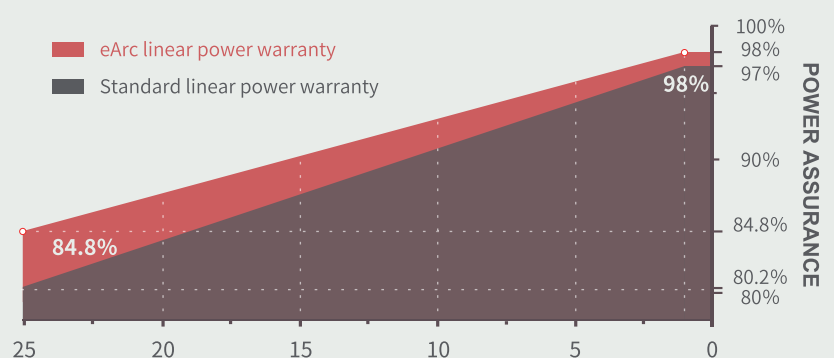


ULTRA-LIGHT & FLEXIBLE SOLAR PANEL

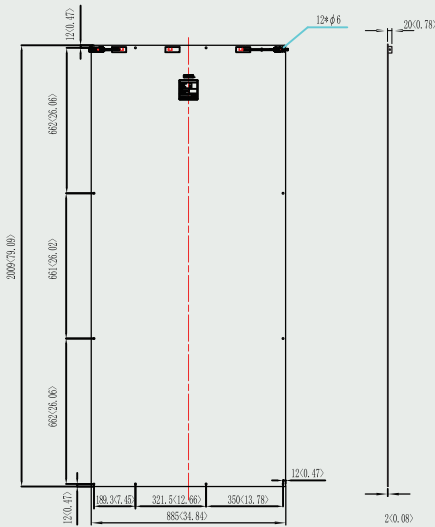
LINEAR PERFORMANCE WARRANTY

CAUTION: Read installation manual before using the product.

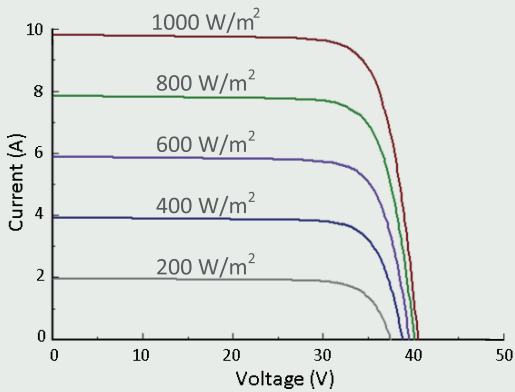
©2021 Sunman (zhenjiang) Co., Ltd. All rights reserved. Specifications included in this datasheet are subject to change without notice.



DIMENSIONS



I-V CURVE (310)



TEMPERATURE CHARACTERISTICS

| | |
|--|-------------------|
| Nominal Module Operating Temperature(NMOT) | 41±2 °C |
| Temperature Coefficient of P_{max} | -0.38 %/°C |
| Temperature Coefficient of V_{oc} | -0.28 %/°C |
| Temperature Coefficient of I_{sc} | 0.020 %/°C |

Dealer information



SMFEDB IEC EN 2023A 2

ELECTRICAL CHARACTERISTICS

| STC | SMF305M-5X12DB-e | SMF310M-5X12DB-e |
|------------------------------------|------------------|------------------|
| Maximum Power (P_{max}) | 305 | 310 |
| Maximum Power Voltage (V_{mp}) | 33.0 | 33.3 |
| Maximum Power Current (I_{mp}) | 9.25 | 9.31 |
| Open-circuit Voltage (V_{oc}) | 40.3 | 40.5 |
| Short-circuit Current (I_{sc}) | 9.74 | 9.81 |
| Module Efficiency (%) | 17.2 | 17.4 |
| Operating Temperature | -40 °C to 85 °C | |
| Maximum System Voltage | 1000 V DC (IEC) | |
| Maximum Series Fuse Rating | 20 A | |
| Application Class | Class A | |
| Power Tolerance | 0/+5 W | |

STC: Irradiance 1000W/m², Cell temperature 25 °C, AM=1.5.

Tolerances of P_{max} , V_{oc} and I_{sc} are within ±5%

| NMOT | SMF305M-5X12DB-e | SMF310M-5X12DB-e |
|------------------------------------|------------------|------------------|
| Maximum Power (P_{max}) | 229 | 233 |
| Maximum Power Voltage (V_{mp}) | 30.5 | 30.7 |
| Maximum Power Current (I_{mp}) | 7.51 | 7.59 |
| Open-circuit Voltage (V_{oc}) | 37.4 | 37.6 |
| Short-circuit Current (I_{sc}) | 7.96 | 8.04 |

NMOT: Irradiance 800W/m², Ambient temperature 20 °C, AM=1.5, Wind speed 1 m/s.

MECHANICAL CHARACTERISTICS

| | |
|-------------------|---|
| Solar Cell | Monocrystalline silicon (158.75mm) |
| No. of Cells | 60 (5×12) |
| Module Dimensions | 2009×885×2 mm |
| Weight | 5.0kg |
| Backsheet | Black |
| Frame | Frameless |
| J-box | IP 68 rated |
| Output Cables | Photovoltaic technology cable 4.0 mm 2, (+)450 mm / (-)450 mm |
| Connector | MC4 compatible |

PACKAGING CONFIGURATION

| | 20' GP | 40' HC |
|----------------------|--------|--------|
| Module per pallet | 66+10 | 66+11 |
| Pieces per container | 710 | 1617 |